



Dual LS 1200

Light screens for professional use

Double measurements:

Under certain circumstances it can become necessary to measure two velocities parallel or sequentially to get demanded data (Information). The following list shows some examples of double measurements, but makes no claim to completeness.

- To make sure that the measurement is correct (backup measurement, reliability, redundancy)
- Important and/or not repeatable measurements
- QM guidelines and/or specifications
- Customers/Contractors wish or specification
- Customer specific test setup, that requires 2 velocities (e.g. before and after a target or a other special given problem)
- Calculation of the ballistic coefficient
- Required by law
- Forensic investigations

The new designed High End lightbarrier family LS 1200 connect are highly precise unidirectional static Infrared lightbarriers. Because of the size, the lightbarriers are suitable for military use, forensic analysis, ballistic labs, aviation ...

Dual LS 1200 Serie

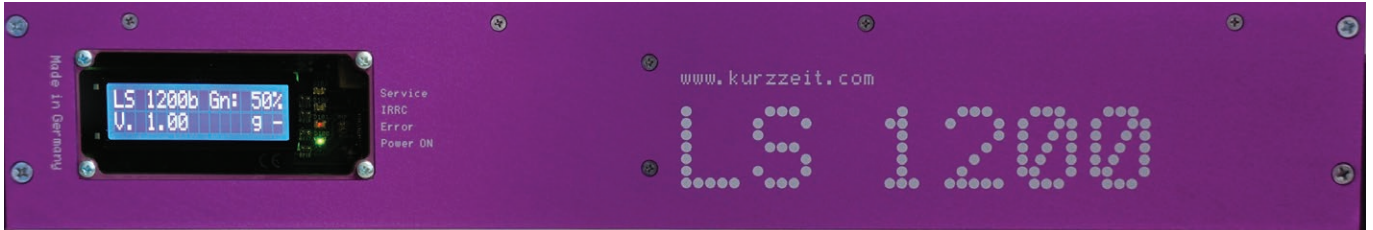
The Lightbarrier family LS xx00 consists at the moment of four members, LS 600, LS 800, LS 1000 and LS 1200 with Measuring windows from 600 x 400mm (LS 600) to 1200 x 400mm ! (LS 1200)



The light screens have the following technical data:

Caliber range:	4 - 40 mm
Velocity range:	10 - 2000 m/s
Temperatur range:	0 - 40 °C without condensation Extended Temperature range possible!
Accuracy:	+/- 0.1 % of measured value
Very big sensor area, from 600 x 400 mm up to 1.200 x 400 mm	
Standard measuring base is 1000 mm. Other measuring base possible.	
Signal output: Analog positiv	
Output connector: 50 Ohm BNC.	
Maximum BNC cable length: 25m	
The amplitude of the output signal is depending on the caliber and the gain setup.	
The delivered power supply unit can be used from 100 to 240 volt AC	
Customized solutions are possible.	
The LS 1200 family consists of two independent working single light screens, mounted on a anodized aluminium frame with 1000mm (standard) measurement base.	
Every light screen has it's own power supply	
For service, or setup purposes, the light screen can be configured with the infra red remote control unit.	
Weight:	ca. 16 - 24 Kg (LS 600 - LS 1200)
Frame material:	Anodized Aluminium
Power consumption total:	ca. 16 W

Dual LS 1200 Serie



Lightscreen configuration via included IR-remote control



Disclaimer

1. Content

The author reserves the right not to be responsible for the topicality, correctness, completeness or quality of the information provided. Liability claims regarding damage caused by the use of any information provided, including any kind of information which is incomplete or incorrect, will therefore be rejected. All offers are non-binding and without obligation. Parts of the pages or the complete publication including all offers and information might be extended, changed or partly or completely deleted by the author without separate announcement.

2. Referrals and links

The author is not responsible for any contents linked or referred to from his pages - unless he has full knowledge of illegal contents and would be able to prevent the visitors of his site from viewing those pages. If any damage occurs by the use of information presented there, only the author of the respective pages might be liable, not the one who has linked to these pages. Furthermore the author is not liable for any postings or messages published by users of discussion boards, guestbooks or mailinglists provided on his page.

3. Copyright

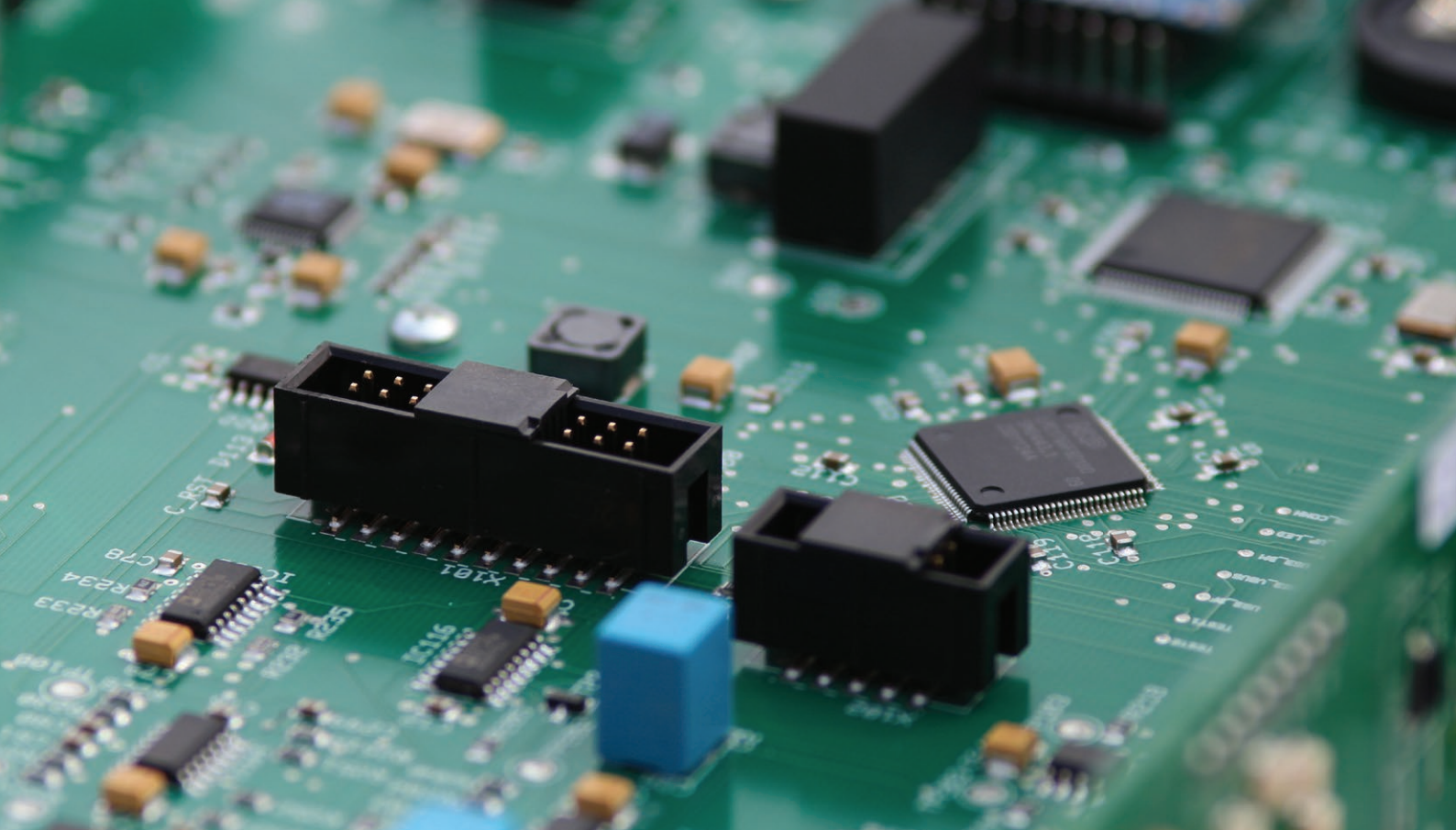
The author intended not to use any copyrighted material for the publication or, if not possible, to indicate the copyright of the respective object. The copyright for any material created by the author is reserved. Any duplication or use of objects such as images, diagrams, sounds or texts in other electronic or printed publications is not permitted without the author's agreement.

4. Privacy policy

If the opportunity for the input of personal or business data (email addresses, name, addresses) is given, the input of these data takes place voluntarily. The use and payment of all offered services are permitted - if and so far technically possible and reasonable - without specification of any personal data or under specification of anonymized data or an alias. The use of published postal addresses, telephone or fax numbers and email addresses for marketing purposes is prohibited, offenders sending unwanted spam messages will be punished.

5. Legal validity of this disclaimer

This disclaimer is to be regarded as part of the internet publication which you were referred from. If sections or individual terms of this statement are not legal or correct, the content or validity of the other parts remain uninfluenced by this fact.



Kurzzeitmesstechnik Werner Mehl

Werner Mehl

Schulweg 1
91583 Diebach / Bellershausen
Germany

Tel. +49 (0)9868 93811
Fax +49 (0)9868 93812
Mail: info@kurzzeit.com

USt. Ident Nr.:
DE 132 634 615

Finanzamt Rothenburg

© 2013 kurzzeitmesstechnik Werner Mehl

www.kurzzeit.com